

Yealink

Soundbar

MSpeaker



English | 简体中文

Quick Start Guide(V1.1)

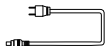
Package Contents



MSpeaker



Expansion screws and Self-tapping screws



Power Cable



3m AUX Cable



Quick Start Guide

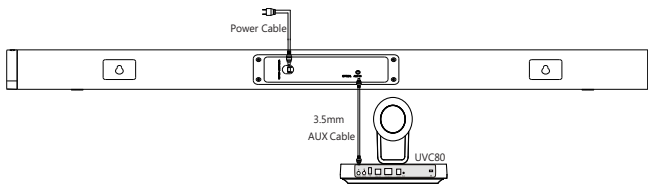


We recommend that you use the accessories provided or approved by Yealink. The use of unapproved third-party accessories may result in poor performance.

MSpeaker Connection

You can connect the MSpeaker to the Line Out port of the UVC80/UVC50/VC800 as an audio output device.

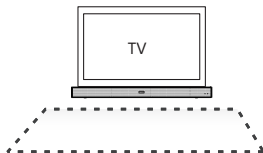
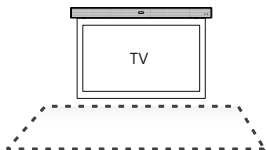
The following is an example of connecting to the UVC80.



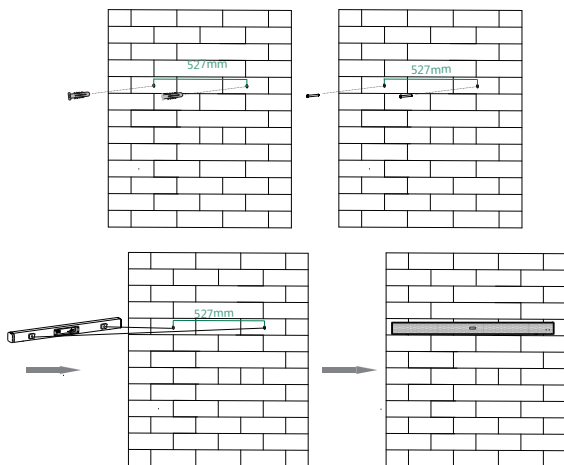
MSpeaker Installation

Select one of the following installation method:

- **Fix on the top of TV or below TV**



If the TV is fixed on the wall, you should mount the MSpeaker on the wall.



● Put on a Flat Surface



Put it at the table edge closest to the TV to make it better output effect to deliver sound to everyone in the conference.